

The Asian Hornet

A pest to be reckoned with

THE ASIAN HORNET

- The Asian hornet



- The European hornet



ASIAN HORNET



ASIAN HORNET

A quick look at AH's life cycle

- Queens emerge in March
- Build a nest which may be low down
- Lay workers – who forage in May
- Build a secondary nest high up in the trees
- Hornets hover in front of hives picking off returning workers
- Queens are produced from September To November
- Who then Hibernate until spring
- Restarting the whole process all over again

THE ASIAN HORNET

Sightings – 2016

- Tetbury, Gloucestershire: 19 Sept – nest destroyed
- Lower Langford, Somerset: on the same day
 - – A single hornet had been captured around May time
 - – The beekeeper kept the hornet but didn't tell anyone
- Bath, Somerset: 13 Oct – single hornet captured

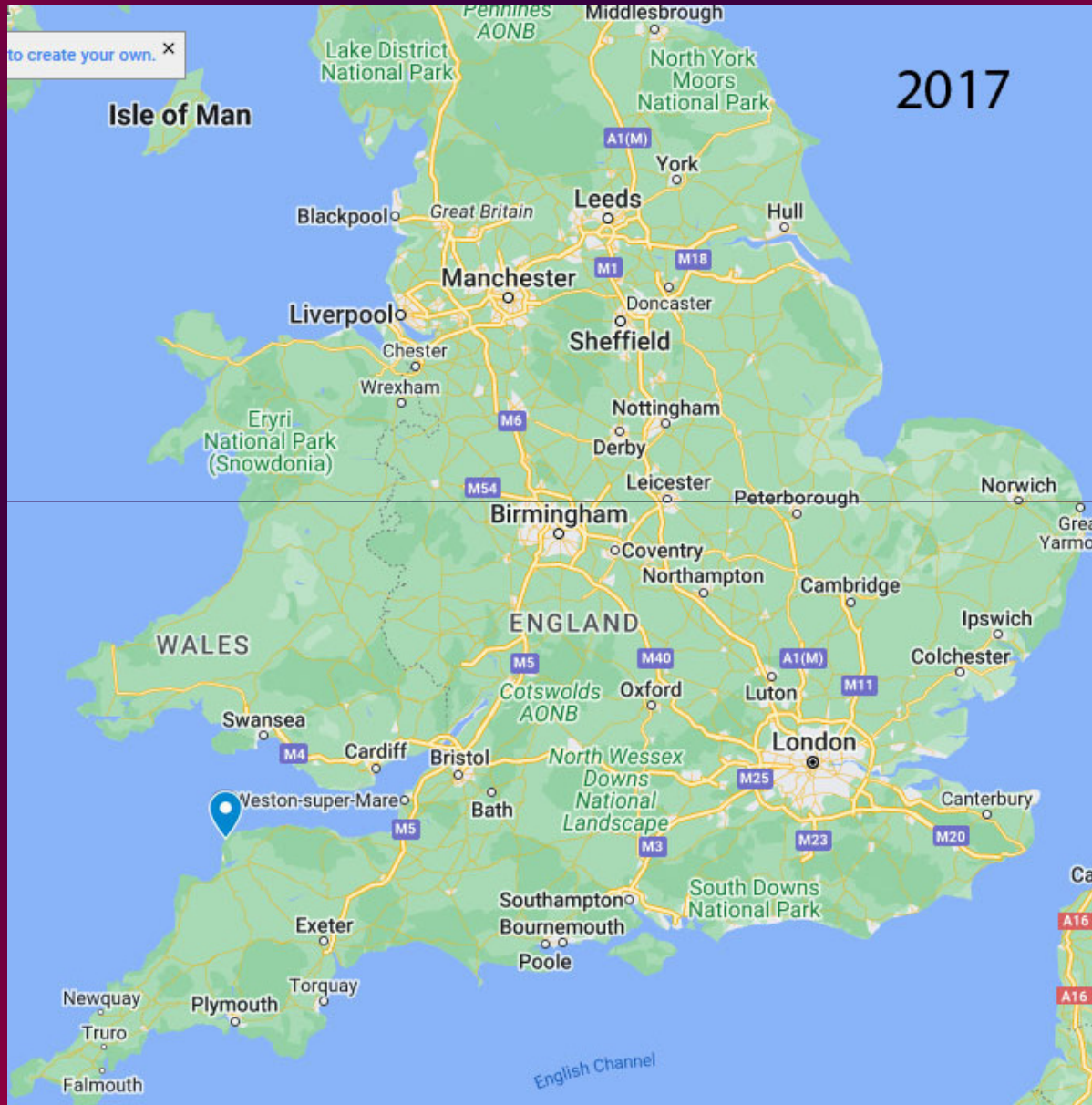
THE ASIAN HORNET

The nest at Tetbury 2016



55 feet high in a tree

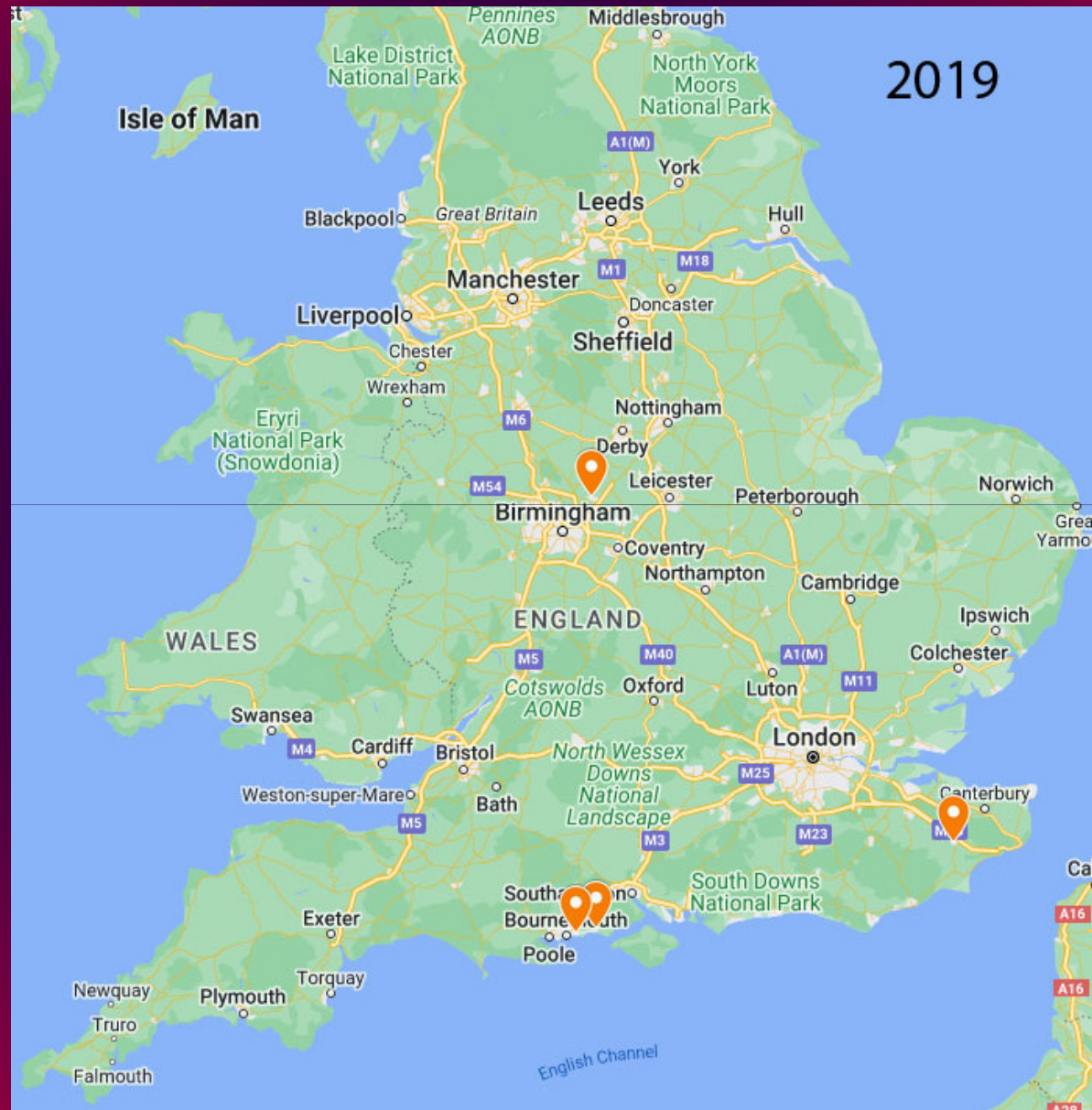
THE ASIAN HORNET



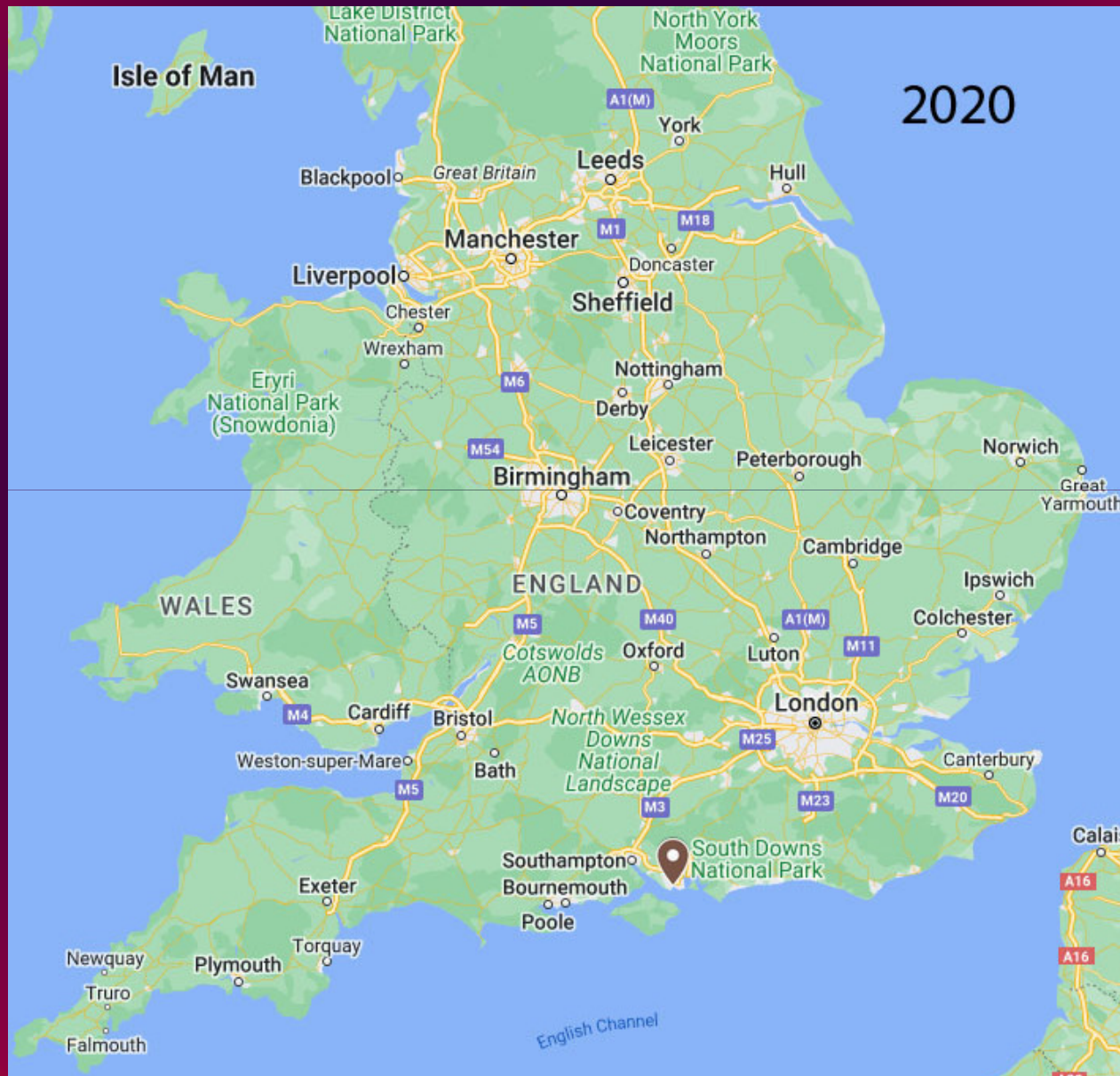
THE ASIAN HORNET



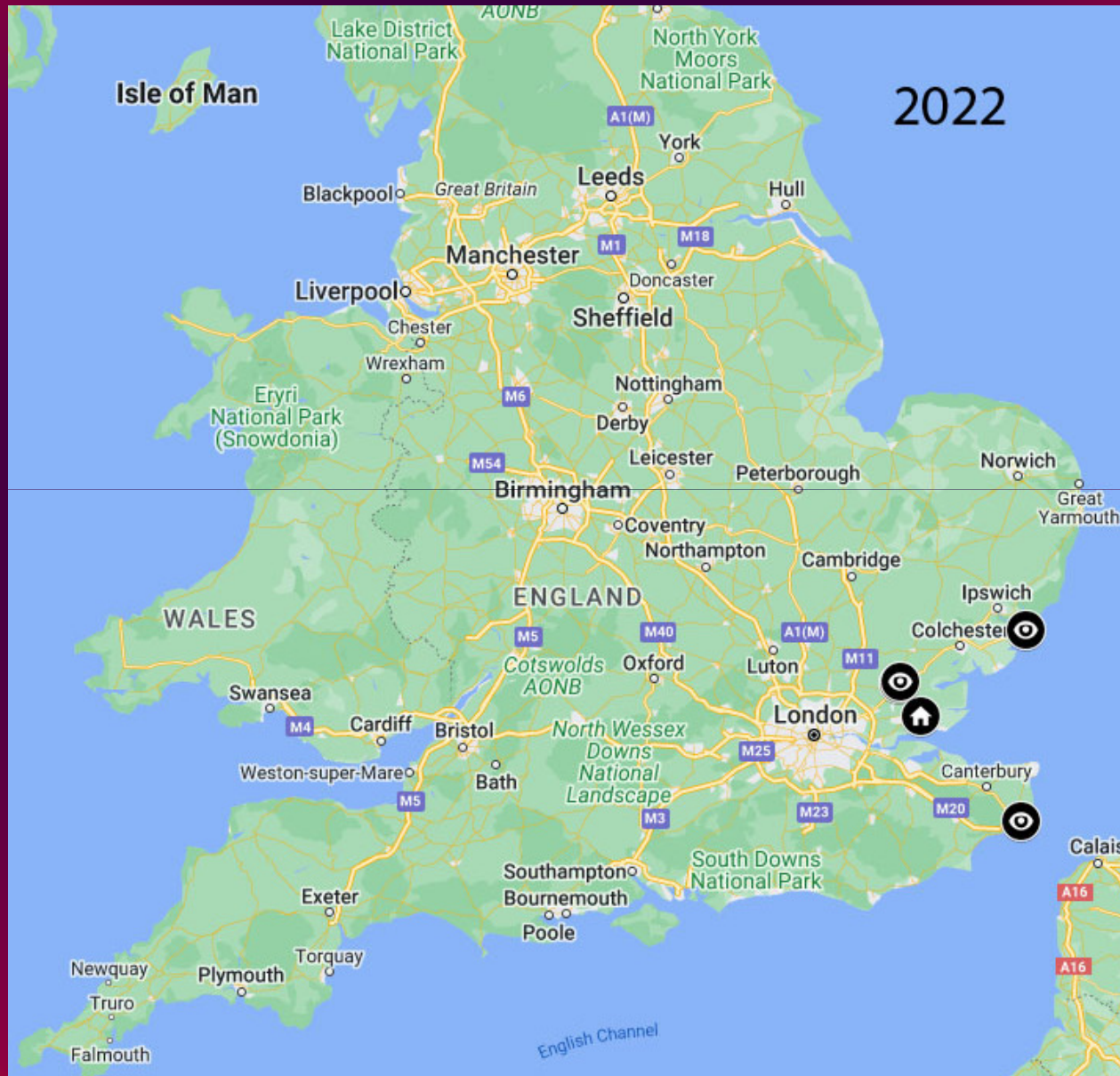
THE ASIAN HORNET



THE ASIAN HORNET



THE ASIAN HORNET



THE ASIAN HORNET



THE ASIAN HORNET



THE ASIAN HORNET

Proposals for 2024

To have a three-stage alert system at branch level

By means of the traffic light system

Green - Lowest

Yellow - Intermediate

Red - Highest

These levels are determined only by us co-operating together

THE ASIAN HORNET

The traffic light alert system

Green

- No confirmed sightings of AH in our area
- Continuous monitoring at each apiary
- Reporting regularly
- Increase public awareness by advertising
- Ask all beekeepers to take part in distributing posters

THE ASIAN HORNET

The traffic light alert level system

Yellow

- I. individual sightings of AH but no confirmed queens or nests
- II. Confirmed sighting of AH from a neighbouring association

- Work in partnership with the NBU
- To set out monitoring and bait traps
- To make beekeepers in the wider area aware of the situation
- To set up a communication network to provide feedback of where monitored baits are

THE ASIAN HORNET

The traffic light alert level system

Red

- Confirmed sighting of AH and/or reported nest in our area
 - Work with the NBU by providing assistance
 - To make beekeepers in the wider area aware of the situation
 - Use the communication network to provide feedback and information of where the monitored baits are
- We expect the NBU to manage the tracking and destruction of any nests

Actions - Spring monitoring activity 2024

- Set a baseline for our area
- Setting up monitoring stations or traps with appropriate bait
- On a particular date all are encouraged to set monitoring stations for a two day period
- Report the results--- via our website
- Need volunteers for monitoring/trapping throughout the year
- And volunteers to become members of an AHAT team

THE ASIAN HORNET

Actions – What to do when spotting a hornet

- Take a photograph – if possible
- Take careful note of when, where and what the AH was doing when spotted
- The need to make a report quickly
 - via the 'Asian Hornet Watch' app on your mobile
 - Email to nonnativespecies.org/alerts/asianhornet
- Please let me know – via the website or email

THE ASIAN HORNET

Actions – what NOT to do

- Do not follow it to it's nest
- If you spot a nest
 - Do not approach the nest
 - They are very territorial
 - Can be extremely aggressive
- Nests are usually high in trees
- Can build a nest on or close to the ground
- Even under the eaves of houses
- Inside unused or derelict buildings

Positive actions for us as beekeepers

Make the public aware

- Distributing leaflets
- Libraries
- GP surgeries
- Schools
- Villages halls
- Golf clubs
- Allotments
- Tree surgeons
- Garden maintenance firms
- Plant nurseries
- Garden centres

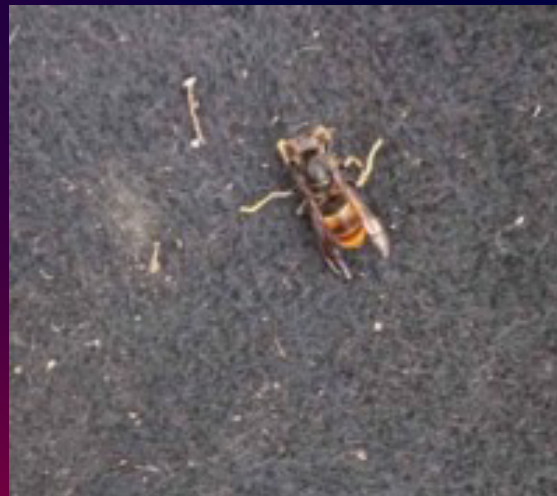
Listed below are other options for bait for use in spring:

- Half litre of dark beer plus two tablespoons of sugar or honey, mix together and add sufficient to trap or lure as/when required
- Half litre of water, three tablespoons of sugar or honey, one cup cider vinegar, mix together and add sufficient to trap or lure as/when required
- Half litre dark beer plus cup of blackcurrant cordial, mix together and add sufficient to trap or lure as/when required
- 350ml sweet white wine and 20-230ml mint syrup
- Orange juice

First sighting of the year

An Inspector from the Animal and Plant Health Agency's (APHA), National Bee Unit has responded to a sighting of a lone Asian Hornet (*Vespa velutina*) in Westfield, Hastings, East Sussex on 19 January 2024 following a report by a member of the public after discovering it in the footwell of their car.

Despite searching the area, we have been unable to locate a sample. Local Asian Hornet Teams have been alerted and are continuing to monitor in the area. The National Bee Unit encourages beekeepers and the public to remain vigilant this spring after 72 nests were found and killed in England during 2023.



Last year's sightings of the hornet, if any, where and what context

Setting and type of traps available – including making your own

What do if you spot a hornet

Asian hornet nests - dangers of going it alone

Working at branch and County level our Asian Hornet plan for 2024 is based on a three stage level of alert

- Green – No sightings of AH in our area

- Yellow – Reported AH individual sighting, but no confirmed queen or nests. Or confirmed reports of nests from a neighbouring association.

- Red – Reported and confirmed nest found in our area.

Action at the Green status

With no confirmed sightings in our area, actions are based on increasing local awareness.

Within the East Lancashire branch of LBKA we have established a network of 25 named volunteers, one from each main town and city and provided them with 20 Non-Native species poster "have you seen this insect". We asked them to use their local knowledge to distribute accordingly to local groups and markets. We want to replicate this cross the whole of the county in the spring of 2024.

<https://www.bbka.org.uk/Handlers/Download.ashx?IDMF=b53d4c05-0fdd-4c2d-8822-fe2a5138bb94>

Action at the Yellow status

Should there be a sighting we will work with NBU to set out bait stations/traps accordingly and make the local beekeepers aware.

Action at the Red status

If there is confirmation of a nest or nests in our area we will again work with the NBU to make all beekeepers in the wider area aware and set up regular communication channels to provide feedback of where baits are being monitored to inform the extent of the sightings.'

At this point we expect that the NBU will manage the tracking and destruction of any nests.

Spring AH monitoring activity

We want to provide a baseline of the AH's in our area.

On a date is yet to be confirmed, we will be encouraging all our members to set out monitoring stations for a 2 day period in a coordinated manner, being very mindful to avoid bycatch.